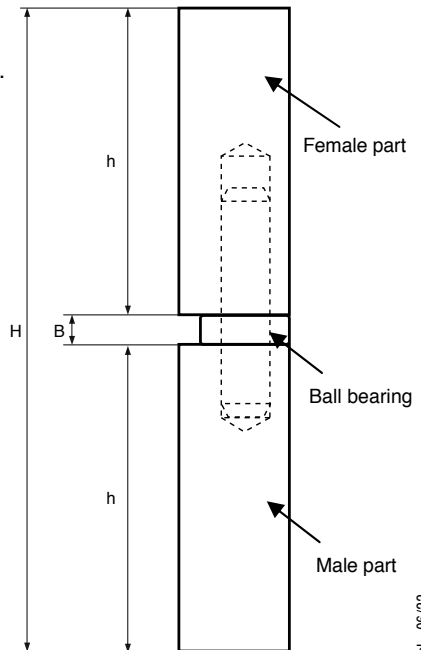
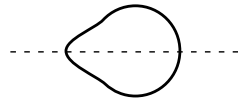




Installation instructions SOUDAROC® Thrust Ball Bearing

Réf :S.BB.080 / S.BB.100 / S.BB.120 / S.BB.140 / S.BB.160 / S.BB.180 / S.BB.200

1. Position the articulated element and its support with space desired for a proper operation.
2. Replace ball bearings with brass rings of a thickness B according to the size of your hinge.
3. Position your assembled hinges.
4. Weld your hinges aligned in the same axe of rotation.
5. Check the articulation.
6. Replace the brass rings by the ball bearings.



Alignment and welding strength remain in the user's responsibility.

Regularly lubricate the shaft.

Ref	H in mm	h in mm	B in mm	Load per hinge in kg
S.BB.080	83,6	38,8	6	80
S.BB.100	104	48,5	7	80
S.BB.120	124	58,5	7	80
S.BB.140	143	68	7	100
S.BB.160	164	78	8	160
S.BB.180	184	88	8	160
S.BB.200	204	98	8	160