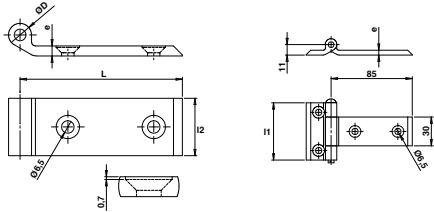
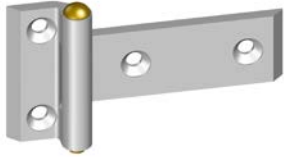




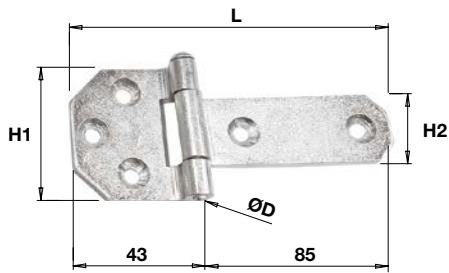
Articuler

www.torbel.fr



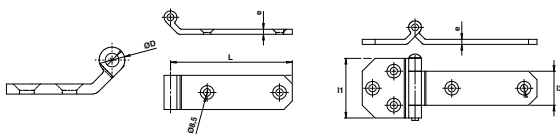
PE1513.. Penture percée bout droit

Code		L	l1	l2	ØD	e		Dispo. (sem.)
PE1513P1	BRUT	85	60	30	12	5		Nous consulter



PE1519.. Penture percée

Code		L	H1	H2	ØD	e		Dispo. (sem.)
PE1519P1	BRUT	128	60	30	12	5,2		Nous consulter



PE1606.. Penture légère cambrée

Code		L	l1	l2	ØD	e		Dispo. (sem.)
PE1606LC1	Z.BLANC	143	70	40	15	6		Nous consulter

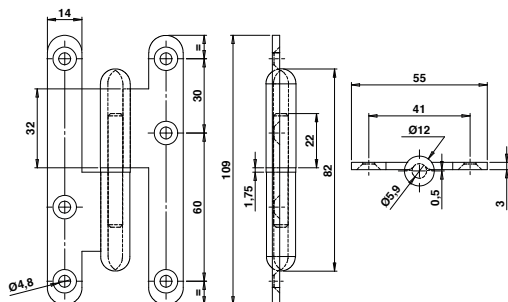
Paumelles



Modèle gauche



Modèle droite

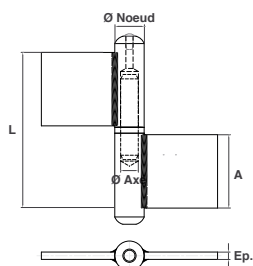


J530.. Paumelle droite bouts ronds

Code sens gauche	Code sens droite	Color	Dim.	Weight	Dispo. (sem.)
J530090	J530080	Z.BLANC	80x45	12	STOCKÉ
J530330	J530300	Z.BLANC	110x55	12	STOCKÉ

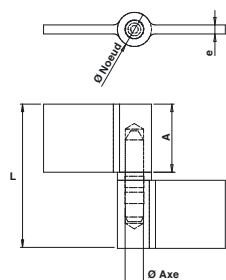
Autres dimensions disponibles.

GSRN.. Paumelle de grille soudée à nœuds arrondis Bague laiton

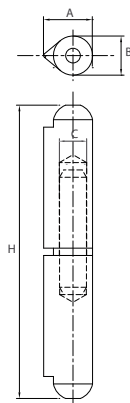


Code	Color	L	A	EP. lame (e)	Ø Noeud	Ø Axe	Charge max /Paumelle	Weight	Dispo. (sem.)
Axe acier - Lame au centre									
GSRN060	BRUT	60	30	5	14	7	35 kg	6	STOCKÉ
GSRN070	BRUT	70	35	5	16	8	35 kg	6	STOCKÉ
GSRN080	BRUT	80	40	5	18	9	40 kg	6	STOCKÉ
GSRN090	BRUT	90	45	5	20	10	45 kg	6	STOCKÉ
GSRN100	BRUT	100	50	5	20	12	75 kg	6	STOCKÉ
GSRN120	BRUT	120	60	6	22	12	75 kg	6	STOCKÉ
GSRN140	BRUT	140	70	6	22	12	75 kg	6	STOCKÉ
GSRN160	BRUT	160	70	6	23	14	95 kg	6	STOCKÉ
GSRN180	BRUT	180	70	6	23	14	95 kg	6	STOCKÉ

GPS.. Paumelle de grilles «GO»



Code	Color	L	A	EP. lame (e)	Ø Noeud	Ø Axe	Weight	Dispo. (sem.)
GPS06BLC	BRUT	60	30	4	15	8	30	2
GPS07BLC	BRUT	70	35	4	15	8	30	2
GPS08BLC	BRUT	80	40	4	15	8	20	2
GPS09BLC	BRUT	90	45	5	16	9	20	2
GPS10BLC	BRUT	100	50	5	16	9	10	2
GPS12BLC	BRUT	120	60	6	18	10	10	2
GPS14BLC	BRUT	140	70	6	18	10	10	2



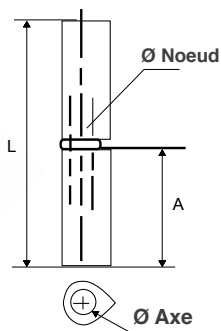
SALBR..

SOUDALU® Paumelle aluminium à souder bouts ronds Bague INOX

Code		H	A	B	C	Charge max /Paumelle		Dispo. (sem.)
Axe INOX								
SALBRABI08	BRUT	80	16	13	8	20 kg	20	STOCKÉ
SALBRABI10	BRUT	100	20	16	10	30 kg	20	STOCKÉ
SALBRABI12	BRUT	120	20	16	11	30 kg	10	STOCKÉ

Code		H	A	B	C	Charge max /Paumelle		Dispo. (sem.)
Axe INOX								
SALBRABI15	BRUT	150	25	20	13	55 kg	10	4
SALBRABI18	BRUT	180	25	20	14	60 kg	10	4
SALBRABI20	BRUT	200	25	20	14	60 kg	10	4

Axe INOX + Graisseur TK								
SALBRTK100	BRUT	100	20	16	10	30 kg	10	4



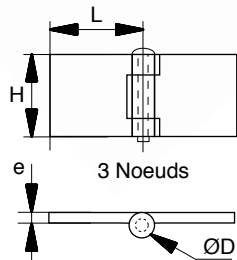
MA..

Paumelle MAROC® - Bague Laiton

Code		L	A	Ø Noeud	Ø Axe		Dispo. (sem.)
MA100ABLA	BRUT	100	20	16	9	20	STOCKÉ
MA120ABLA	BRUT	120	20	16	9	10	STOCKÉ
MA160ABLA	BRUT	160	25	20	11	10	STOCKÉ
MA180ABLA	BRUT	180	29	23	14	10	STOCKÉ

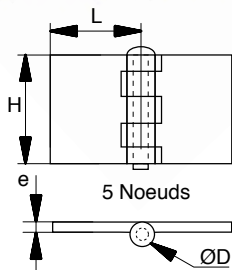
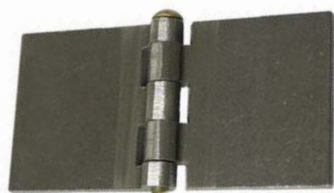
Code		L	A	Ø Noeud	Ø Axe		Dispo. (sem.)
MA80ABLA	BRUT	80	16	13	7	30	2
MA140ABLA	BRUT	140	25	20	11	10	2
MA200ABLA	BRUT	200	29	23	14	10	2

Charnières



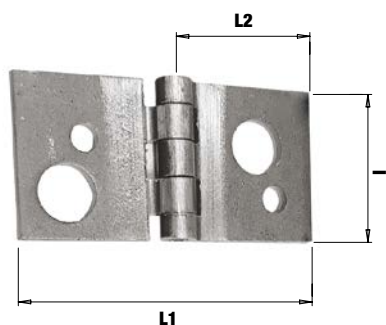
CH32.. Charnière 3 noeuds

Code		H	L	ØD	e		Dispo. (sem.)
CH3230030	BRUT	30	30	12	5	20	4
CH3230040	BRUT	30	40	12	5	20	4
CH3230060	BRUT	30	60	12	5	20	4
CH3235040	BRUT	35	40	12	5	20	4
CH3235060	BRUT	35	60	12	5	20	4
CH3240040	BRUT	40	40	12	5	20	Nous consulter
CH3240050	BRUT	40	50	12	5	20	4
CH3240060	BRUT	40	60	12	5	20	Nous consulter
CH3240080	BRUT	40	80	12	5	20	4
CH3240090	BRUT	40	90	12	5	20	Nous consulter
CH3245040	BRUT	45	40	12	5	20	4
CH3245060	BRUT	45	60	12	5	20	4



CH5.. Charnière 5 noeuds

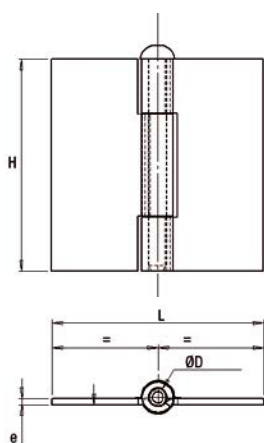
Code		H	L	ØD	e		Dispo. (sem.)
CH5250040	BRUT	50	40	12	5	20	4
CH5250050	BRUT	50	50	12	5	20	Nous consulter
CH5250060	BRUT	50	60	12	5	20	4
CH5250080	BRUT	50	80	12	5	20	4
CH5250090	BRUT	50	90	12	5	20	4
CH5260040	BRUT	60	40	12	5	20	4
CH5260060	BRUT	60	60	12	5	20	4
CH5260090	BRUT	60	90	12	5	10	4
CH5280040	BRUT	80	40	12	5	10	4
CH5280060	BRUT	80	60	12	5	10	4
CH5280080	BRUT	80	80	12	5	10	Nous consulter
CH5580080	BRUT	80	80	15	5	5	Nous consulter
CH5660060	BRUT	60	60	16	5	5	4



CH5205.. Charnière 5 nœuds percée

Code sens gauche	Code sens droite		L1	L2	l		Dispo. (sem.)
CH52050G	CH52050D	BRUT	100	50	50	20	Nous consulter

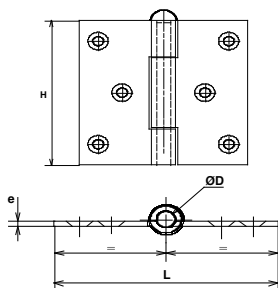
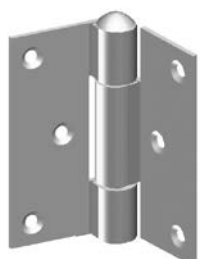
Charnières



4254..

Charnière « Américaine » à noeud roulé non percée

Code		H	L	ØD	e	Dispo. (sem.)
Broche mobile						
425410	BRUT	40	40	4	2 25	4
425420	BRUT	50	50	6	2 25	4
425430	BRUT	60	60	6	2 25	4
425440	BRUT	70	70	6	2 25	4
425450	BRUT	80	80	6	2,5 25	4
425460	BRUT	100	100	6	2,5 25	4

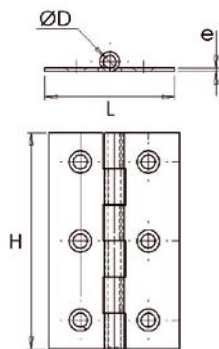
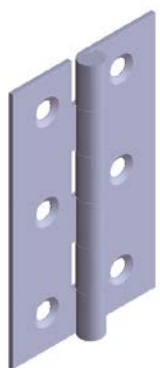


4256..

Charnière « Américaine » à noeud roulé

Code		H	L	ØD	e	Dispo. (sem.)
Broche mobile - Percée fraisée						
425610	Z.BLANC	40	40	4	2 25	4
425620	Z.BLANC	50	50	6	2 25	4
425630	Z.BLANC	60	60	6	2 25	4
425640	Z.BLANC	70	70	6	2 25	4
425650	Z.BLANC	80	80	6	2,5 25	4

écomobilier Soumis à éco-participation Mobilier.



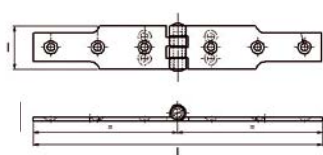
422..

Charnière à nœud roulé Inox

INOX

Code		H	L	ØD	e	Dispo. (sem.)
422830	I 304	60	35	3	1 25	4
422870	I 304	80	45	4	1,2 25	4
422900	I 304	100	50	5	1,5 25	4

écomobilier Soumis à éco-participation Mobilier.



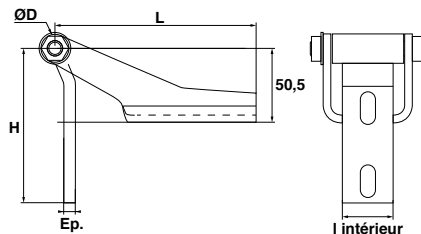
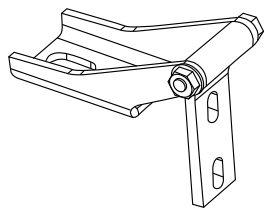
4275..

Charnière à congés Inox

INOX

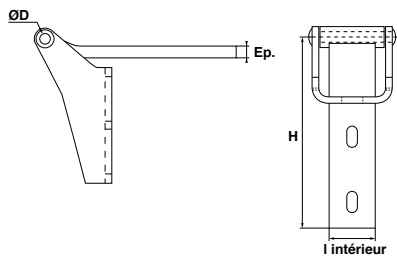
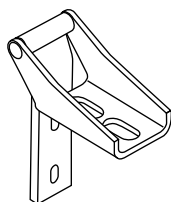
Code		L	l	Dispo. (sem.)
427520	I 304	200	30	25 4
427540	I 304	250	40	12 4
427560	I 304	300	50	12 4

Charnières hayon/coffre



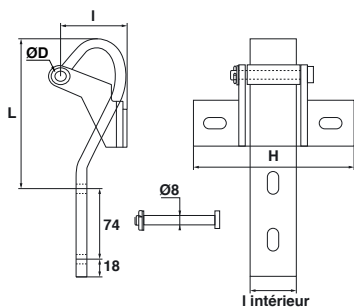
CINS00.. Charnière de porte droite

Code	Color	ØD	H	L	l	l int.	Ep.	Icon	Dispo. (sem.)
CINS001075	Z.BLANC	10	106	138	50	35	8	1	Nous consulter



504149.. Charnière de hayon arrière

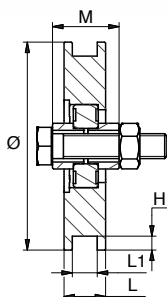
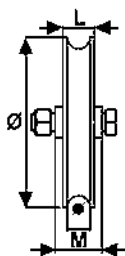
Code	Color	ØD	H	l	l int.	Ep.	Icon	Dispo. (sem.)
504149912	Z.BLANC	8	146	50	35	8	1	Nous consulter



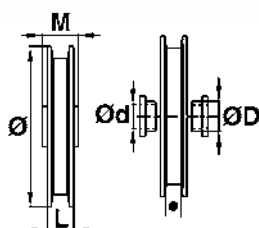
501043.. Charnière de portillon peinte

Code	Color	ØD	H	L	l	l int.	Ep.	Icon	Dispo. (sem.)
5010432563	GRIS	8	122	198	50	35	8	1	Nous consulter

Roues



Poulies



Al.. Roue à gorge ronde acier zingué

Code	Color	Ø	L	M	Weight	Roller	Roller	Roller	Roller	Roller	Dispo. (sem.)
1 roulement											
A14060	Z.BLANC	60	20	32	16	200	6201x1	12x50	17	12	STOCKÉ
A14080	Z.BLANC	80	20	32	16	300	6201x1	14x55	17	8	STOCKÉ
A14100	Z.BLANC	100	20	32	16	300	6201x1	14x55	17	6	STOCKÉ
2 roulements											
A16100	Z.BLANC	100	30	34	20	600	6203x2	14x70	17	4	STOCKÉ
A16120	Z.BLANC	120	30	34	20/22	600	6203x2	14x70	17	2	STOCKÉ
A16152	Z.BLANC	150	40	60	30	1200	6205x2	20x100	25	1	STOCKÉ

Code	Color	Ø	L	M	Weight	Roller	Roller	Roller	Roller	Roller	Dispo. (sem.)
1 roulement											
A14081	Z.BLANC	80	25	32	20	300	6201x1	14x55	17	6	2
A14090	Z.BLANC	90	20	32	16	300	6201x1	14x55	17	6	2
A14101	Z.BLANC	100	30	32	20	300	6201x1	14x55	17	4	2
A14120	Z.BLANC	120	20	32	16	300	6201x1	14x55	17	2	2
2 roulements											
A16140	Z.BLANC	140	30	44	20/22	1000	6005x2	16x70	25	2	2
A16160	Z.BLANC	160	30	44	20/22	1000	6005x2	16x70	25	2	2
A16182	Z.BLANC	180	45	70	35	1200	6205x2	20x100	25	2	Nous consulter
A16200	Z.BLANC	200	30	44	20/22	1000	6205x2	16x70	25	2	Nous consulter

A.. Roue à gorge rectangulaire acier zingué

Code	Color	Ø	L	M	Weight	Roller	Roller	Roller	Roller	Roller	Dispo. (sem.)
1 roulement											
A8060	Z.BLANC	60	20	32	8,5x8	200	6203x1	12x50	17	12	STOCKÉ
A8080	Z.BLANC	80	20	32	12x8	300	6203x1	14x55	17	8	STOCKÉ

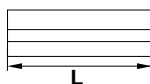
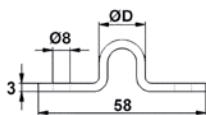
Code	Color	Ø	L	M	Weight	Roller	Roller	Roller	Roller	Roller	Dispo. (sem.)
1 roulement											
A8100	Z.BLANC	100	20	32	15x10	300	6203x1	14x55	17	6	Nous consulter
2 roulements											
A10100	Z.BLANC	100	30	34	21x10	600	6203x2	14x70	17	4	Nous consulter
A10120	Z.BLANC	120	30	34	21x10	600	6203x2	14x70	17	2	Nous consulter
A10140	Z.BLANC	140	30	44	21x10	1000	6005x2	16x70	25	2	Nous consulter
A10200	Z.BLANC	200	30	44	21x10	1000	6005x2	16x70	25	2	Nous consulter

Al.. Poulie à billes acier zingué

Code	Color	Ø	L	M	Weight	ØD	Ød	Roller	Dispo. (sem.)	
1 roulement										
A106006	Z.BLANC	60	13	20	6	180	Ø15	10	8	Nous consulter
A106008	Z.BLANC	60	13	20	8	180	Ø15	10	8	Nous consulter
A108006	Z.BLANC	80	13	20	6	280	Ø15	12	8	Nous consulter
A108008	Z.BLANC	80	13	20	8	280	Ø15	12	8	Nous consulter
A110008	Z.BLANC	100	13	20	8	280	Ø25	12	8	Nous consulter



Remplace avantageusement la poulie en fonte sans roulement à billes. Offre des possibilités d'utilisation diverses.

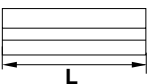
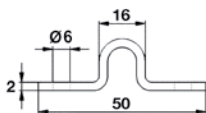
Rails



A51..



Rail rond à visser

Code		L	ØD		Dispo. (sem.)
A51003	GALVA.	3000	16	1	STOCKÉ
A51004	GALVA.	3500	16	1	STOCKÉ
A51203	GALVA.	3000	20	1	STOCKÉ

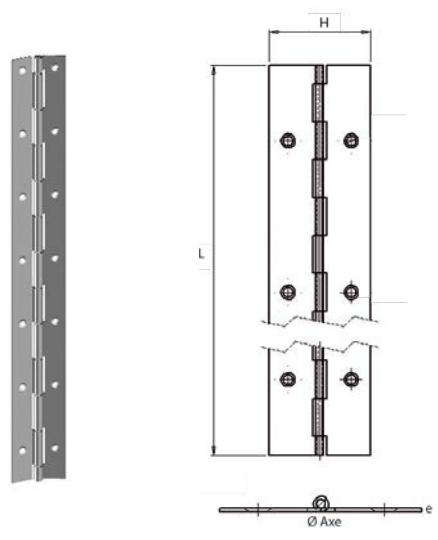


A5100..

Rail rond à visser inox

Code		L		Dispo. (sem.)
A51005	INOX	3000	6	2
A51006	INOX	3500	6	2

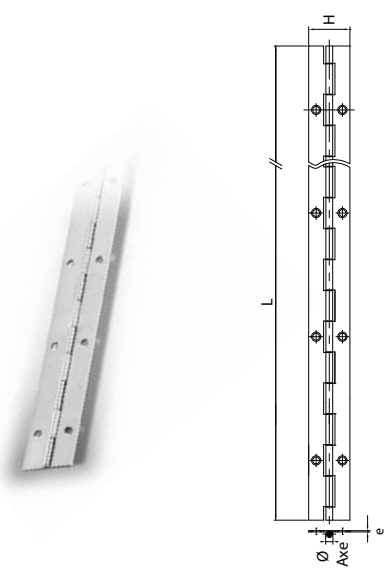
Assemblage



473240 Charnière à piano nœud roulé

Code		L	H x e	Ø Axe		Dispo. (sem.)
473240	BRUT	3480	40x1,8	1,8	30	STOCKÉ

Écomobilier COLLECTER-TRIÉ-RECYCLER Soumis à éco-participation Mobilier.

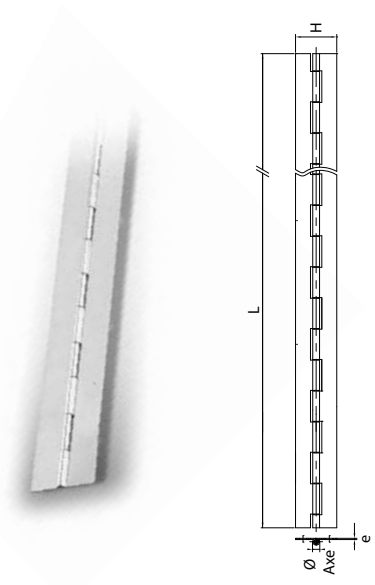


472... Charnière à piano Inox

INOX

Code		L	H x e	Ø Axe		Dispo. (sem.)
Percée + trous fraisés						
472610	I 304	1980	20x0,6	1,8	50	STOCKÉ
472630	I 304	1980	25x0,6	1,8	50	STOCKÉ
472650	I 304	1980	32x0,6	1,8	50	STOCKÉ
472670	I 304	1980	40x0,6	1,8	25	STOCKÉ
472690	I 304	1980	52x0,6	1,8	25	STOCKÉ
472750	I 304	3480	25x0,6	2	30	STOCKÉ
472770	I 304	3480	32x0,6	2	30	STOCKÉ

Écomobilier COLLECTER-TRIÉ-RECYCLER Soumis à éco-participation Mobilier.



47.... Charnière à piano forte non percé Inox

INOX

Code		L	H x e	Ø Axe		Dispo. (sem.)
Axe 2,5 mm Inox						
476100	I 304	1980	32x1	2,5	25	STOCKÉ
Axe 3 mm Inox						
476220	I 304	1980	50x1,2	3	10	STOCKÉ
477350	I 304	1980	40x1,5	3	10	STOCKÉ
477360	I 304	1980	50x1,5	3	10	STOCKÉ
Axe 4 mm Inox						
476670	I 304	1980	50x2	4	5	STOCKÉ
476680	I 304	1980	70x2	4	5	STOCKÉ

Écomobilier COLLECTER-TRIÉ-RECYCLER Soumis à éco-participation Mobilier.